

# RVTools Data Export

## RVTools Overview

RVTools is a Windows .NET application that displays information about virtual environments. It interacts with VMware vSphere Management SDK and API to list information about VMs, CPU, Memory, Disks, Partitions, Network, and more.

## Why is RVTools Required

RVTools is required as the data collection source for Dr Migrate's AVS Express Kiosk. It gathers detailed information about your environment, which Dr Migrate then uses to generate valuable insights about your infrastructure.

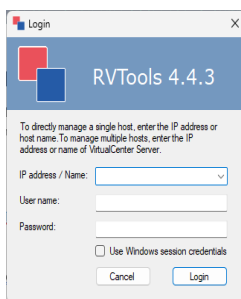
### Installation RVTools

1. Download RVTools - [RVTools - Download | RVTools \(robware.net\)](#)
2. Run the RVtools.msi. This will open the installation wizard
3. Accept the terms and conditions
4. Choose the path for installation and decide if this should be visible only for you or for everyone who uses the computer
5. The installer will begin the installation process and you'll get a notification when the installation is done
6. Simply click on "Close" to close this installation wizard

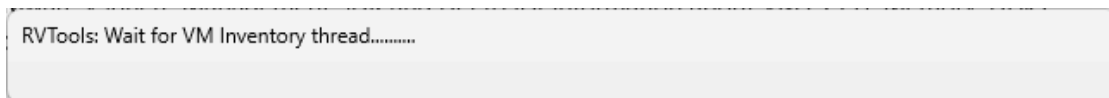
# RVTools Data Export

## Generating an RVTools Export - GUI

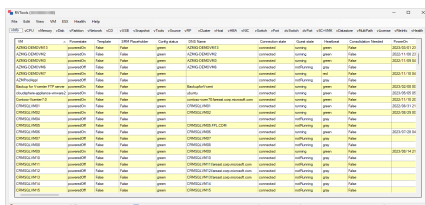
1. Run RVTools from the Windows menu or the shortcut created on the desktop
2. When prompted:
  - a. Enter the IP address, or FQDN, of the vCenter server
  - b. Username in UPN format: username@domain.com
  - c. Password



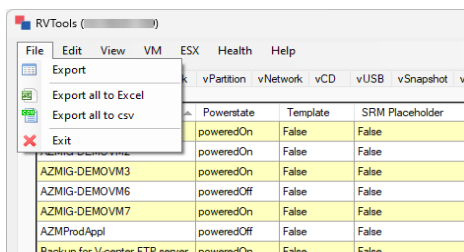
3. The application will connect to the vCenter and start to import all required data



4. Once complete, RVTools will display the default window:



5. Select "Export all to Excel" option from the file menu:



# RVTools Data Export

## Generating an RVTools Export - CLI

Once you have downloaded the RVTools application, execute the following command from Powershell (Run as Administrator).

```
RVTools.exe -s vcsa.corp.contoso.com -passthrough -c ExportAll2xlsx
```

Explanation:

-`RVTools.exe`: This is the executable file for the RVTools utility.

-`-s vcsa.corp.contoso.com`: This specifies the ESXi host or vCenter server to connect to. In this case, it's connecting to `vcsa.corp.contoso.com`.

-`-passthrough`: This flag indicates that pass-through authentication should be used to connect to the ESXi host or vCenter server. Pass-through authentication typically means that the credentials of the currently logged-in user are used for authentication.

-`-c ExportAll2xlsx`: This flag specifies the export option. It tells RVTools to export all tabs of information to an Excel file in xlsx format.

## Next Steps

Please compress your export using standard Windows or Mac Zip compression, in preparation for use with AVS Express Kiosk